



TECHNICAL SPECIFICATIONS

Jakarta - Indonesia



A. GENERAL CHARACTERISTICS

Design standards : IEC 76
 Transformer type : Hermetically Sealed Totally Oil Filled
 Service Condition : Indoor
 Type of oil : Mineral Oil Class 1 acc. to IEC 296
 Number of phase : 3 Phase
 Frequency : 50 Hz

B. TECHNICAL SPECIFICATION

Capacity : 3150 kVA
 Primary Voltage : 20 kV
 Secondary Voltage : 0.4 kV
 Vector Group : Dyn5
 Cooling : ONAN
 Temperature Rise - Oil : 60 oC
 - Winding : 65 oC
 No load losses at nominal voltage : 3500 Watts
 On load losses at principal tapping : 39500 Watts
 Impedance voltage : 7 %
 Off load current at nominal voltage : 1.7 %
 Temperature Insulation Class : A
 Noise : 62 dB
 Tapping value : +/-2.5%; +/-5%

C. INSULATION CLASS OF THE WINDINGS

	Primary	Secondary
Highest system voltage (kV) :	24	1.1
Impulse test voltage (kV) :	125	0
Applied test voltage (kV) :	50	3

D. EFFICIENCY AND VOLTAGE REGULATION

	Efficiency (%)				Voltage Regulation	
	4/4 load	3/4 load	2/4 load	1/4 load	in Volt	in %
Pf 0.8	98.32	98.66	98.95	99.06	379	5.25
Pf 1.0	98.65	98.92	99.16	99.25	394	1.49

E. APPROXIMATE WEIGHTS AND DIMENSION

Total length : 2,420 mm
 Total width : 1,460 mm
 Total height : 2,225 mm
 Weight of oil : 1,480 kg
 Weight of core and winding : 2,425 kg
 Total weight : 5,895 kg
 Approximate Drawing No. :
 Painting Colour : Light Grey RAL 7032

The above dimensions and masses are approximate and provided to give a general description of our proposed transformer.

Revision	Original		Client / Project:	No	:	D 8101
Date	25-Jan-10			Page	:	1 / 2
Est.	SGT					
Chk						
App.						



TECHNICAL SPECIFICATIONS

Jakarta - Indonesia



F. ACCESSORIES

- Name Plate and Rating Plate
- HV Plug in Bushings and LV Porcelain Bushing
- Off Circuit Tap Changer
- Oil Filling Valve
- Oil Draining Valve
- Lifting Lugs
- Grounding Terminal
- Bidirectional Rollers
- Pressure Relief Device Without Contact
- Protection Relay RIS

G. DEVIATIONS / EXCEPTIONS

- None

H. NOTES

- None

I. LIST OF TEST

Routine Test :

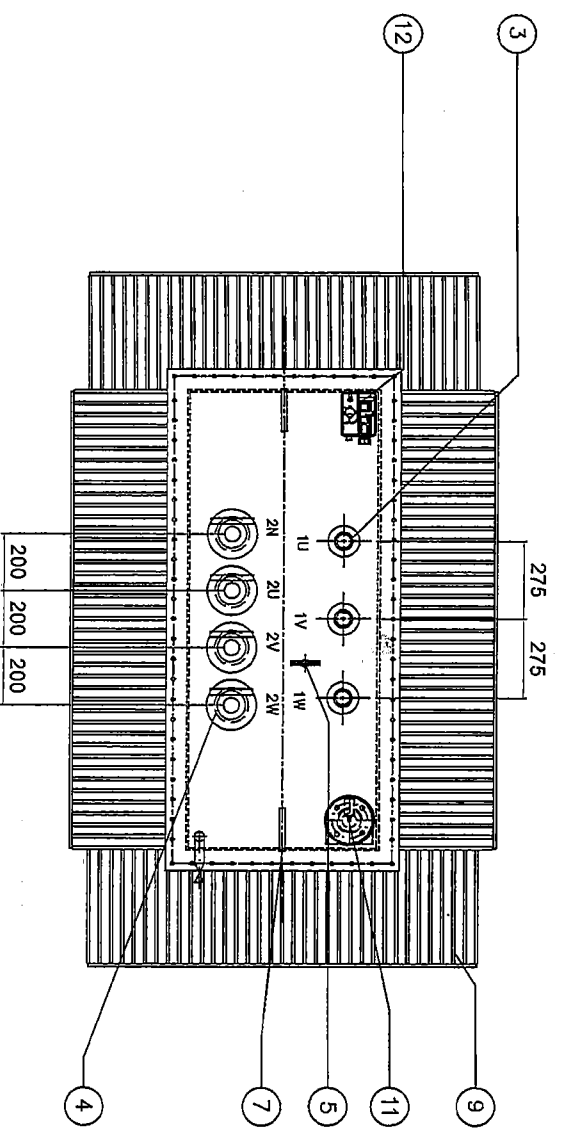
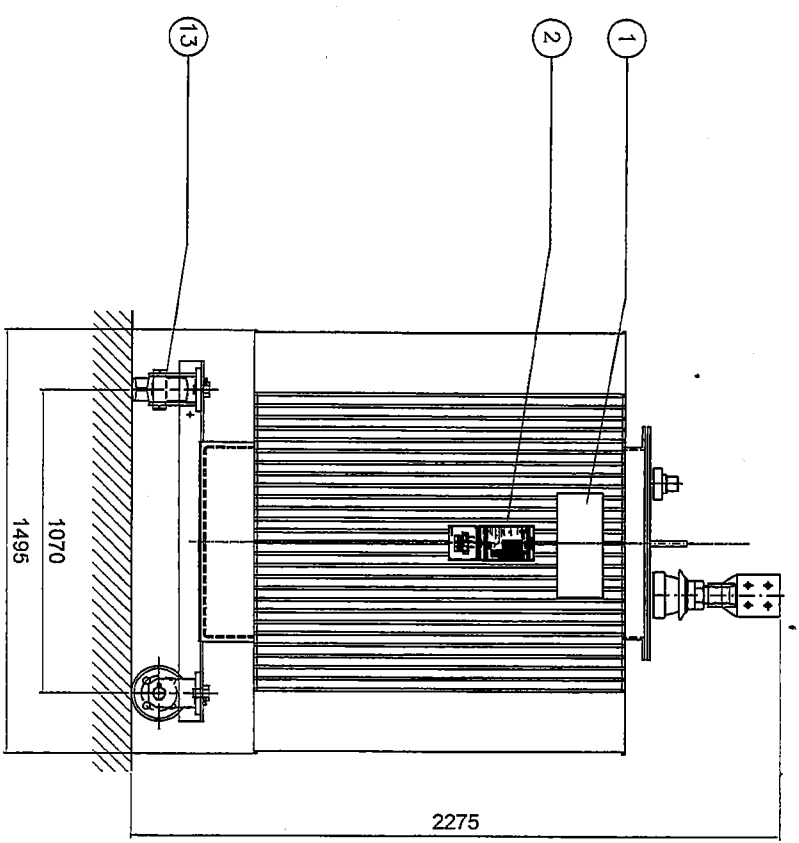
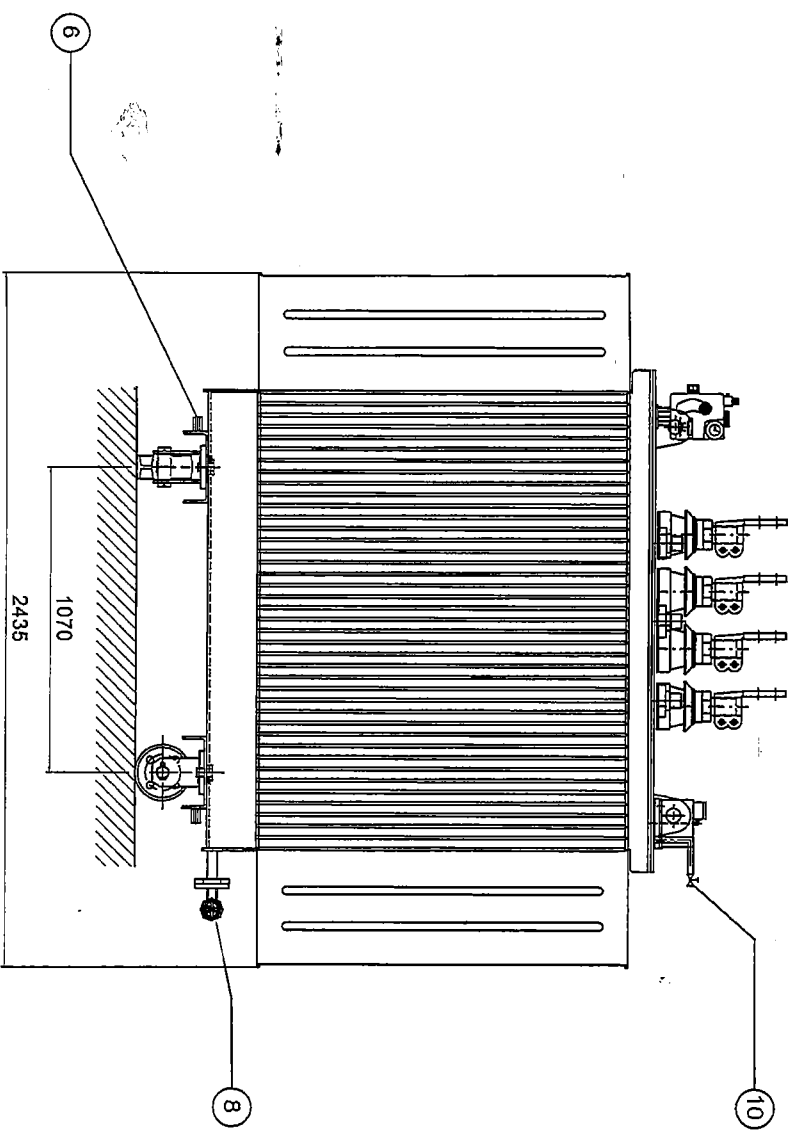
	Yes	No
- Measurement of the resistance value and checking of polarities :	<input checked="" type="checkbox"/>	<input type="checkbox"/>
- Measurement of the ratio on all taps :	<input checked="" type="checkbox"/>	<input type="checkbox"/>
- No load test for measurement of the no load loss and no load current :	<input checked="" type="checkbox"/>	<input type="checkbox"/>
- Short circuit test for determination of the on load loss and impedance :	<input checked="" type="checkbox"/>	<input type="checkbox"/>
- Applied voltage test :	<input checked="" type="checkbox"/>	<input type="checkbox"/>
- Induced voltage test :	<input checked="" type="checkbox"/>	<input type="checkbox"/>

Type test :

- Temperature rise test :	<input type="checkbox"/>	<input checked="" type="checkbox"/>
- Full wave impuls test (1.2 / 50 us) :	<input type="checkbox"/>	<input checked="" type="checkbox"/>

Tests other than the above mentioned list needs further confirmation

Revision	Original	Client / Project:	No	: D 8101
Date	25-Jan-10		Page	: 2 / 2
Est.	SGT			
Chk				
App.				



NOTES :

1. NAME PLATE
2. RATING PLATE
3. HV PLUG IN BUSHING 24kV/250A
4. LV PORCELAIN BUSHING 3kV/6500A
5. OFF CIRCUIT TAP CHANGER
6. EARTHING TERMINAL (2 PCS)
7. LIFTING LUGS
8. DRAINING VALVE
9. RADIATOR FINS
10. FILLING VALVE (SUITABLE FOR FILTER PRESS CONNECTION)
11. PRESSURE RELIEF DEVICE WITHOUT CONTACT
12. R.I.S PROTECTION RELAY
13. BIDIRECTIONAL ROLLER

ELECTRICAL CHARACTERISTICS

STANDARD	: IEC 60076
TYPE	: ONAN
RATING	: 3150 KVA
PRIMARY VOLTAGE	: 20 kV
SECONDARY VOLTAGE	: 0.4 kV
TEMPERATURE RISE	: 60/65°C
FREQUENCY	: 50HZ
VECTOR GROUP	: Dyn5
OIL WEIGHT	: 1650 KG.
CORE & WINDING WEIGHT	: 2600 KG.
APPR WEIGHT	: 6500 KG.
PAINTING COLOUR	: LIGHT GREY RAL 7032

Title: GENERAL ARRANGEMENT DRAWING	
00 ORIGINAL ISSUE	01/03/13 NR FEB 13
Rev. Modification	Date Drawn/Check Review/Approved
Project:	Schneider Electric
Scale: A3	Sheet: 1/1
Drawing No: S.9946.G105	